

Notes

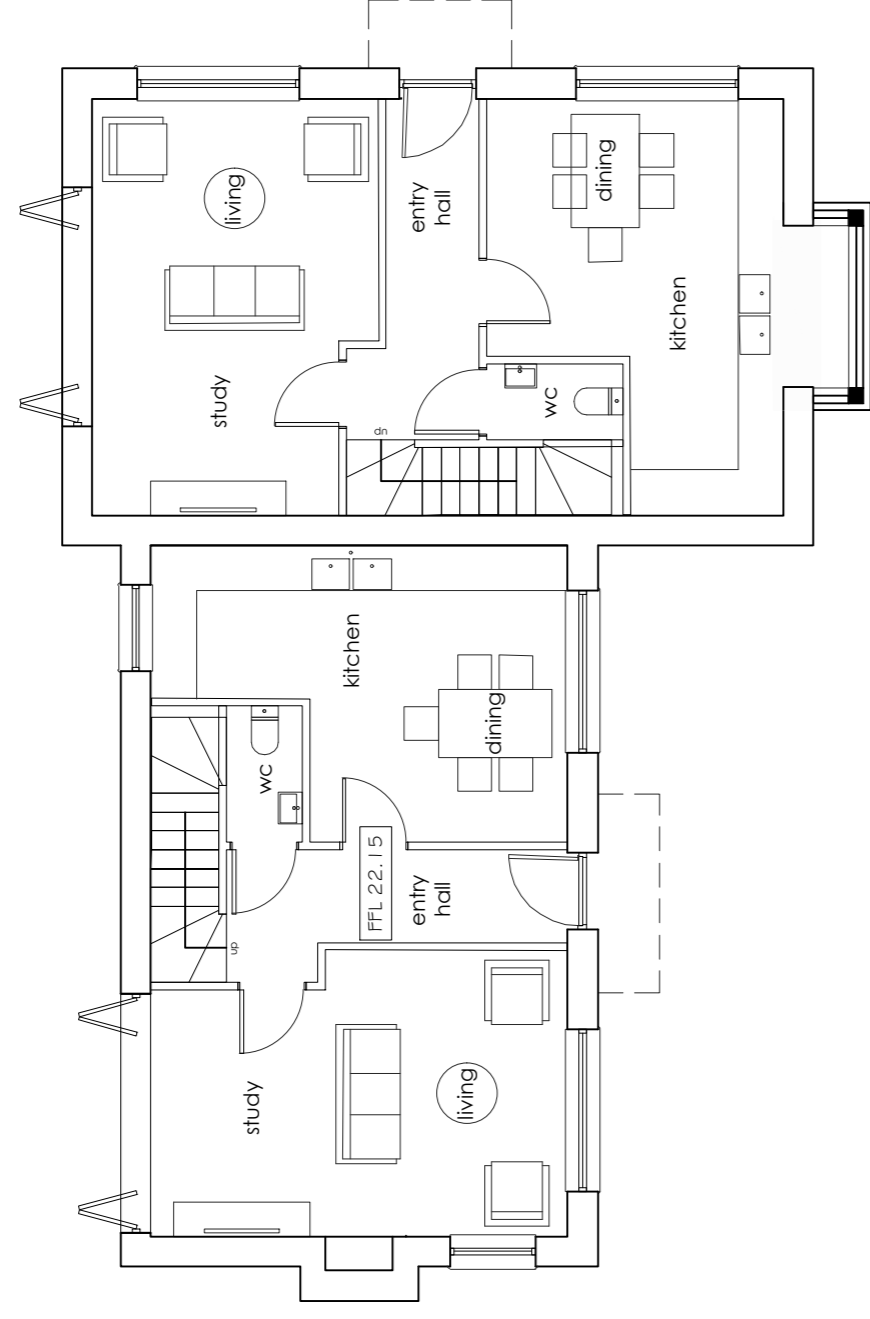
- This drawing is the copyright of MH Architects Ltd
- Do not scale this drawing except for Local Authority planning purposes
- Any amendments must be checked as site by the contractor prior to commencement of the works.

Client Approval

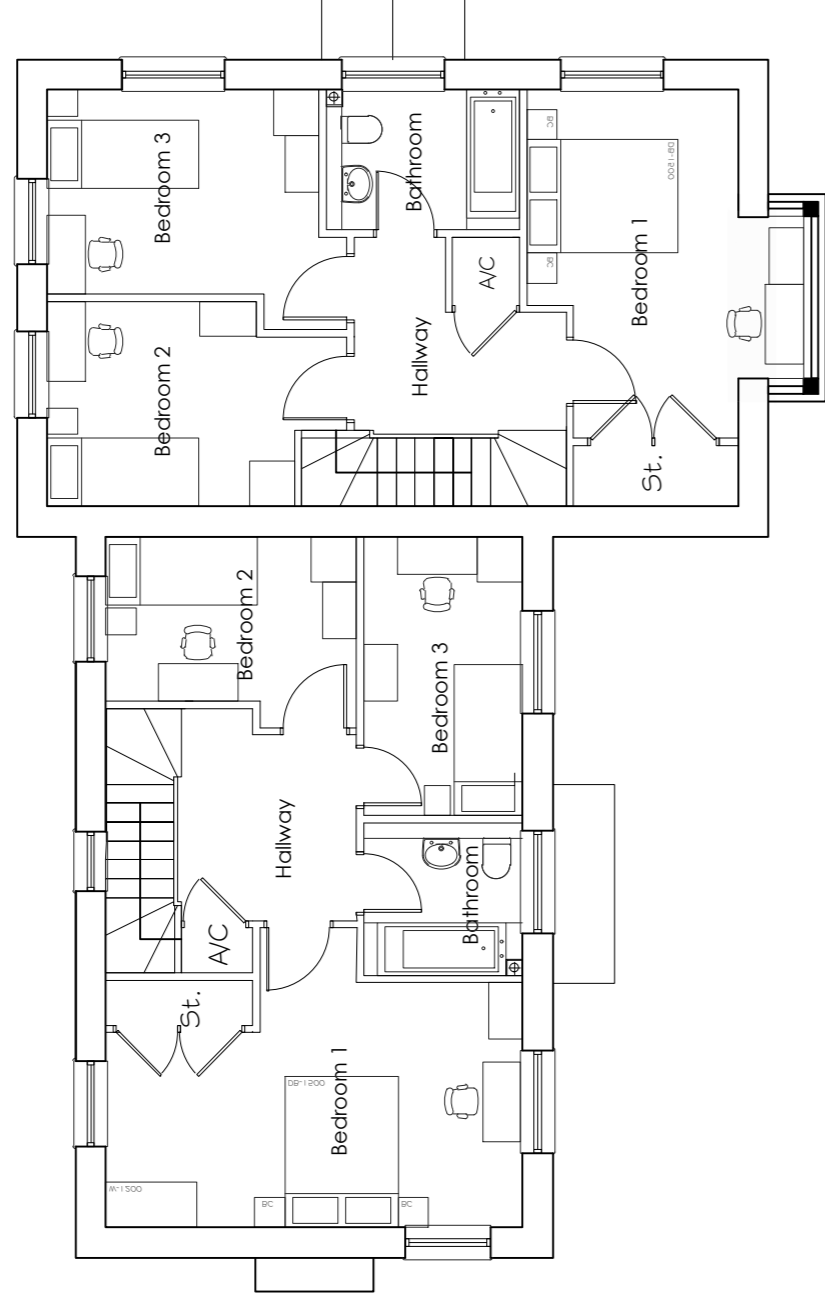
- X A - Approved
- X B - Approved with comments
- X C - Do not use

Rev.	Revision Note/Purpose of Issue	Drawn By	Date	Checked By	Date

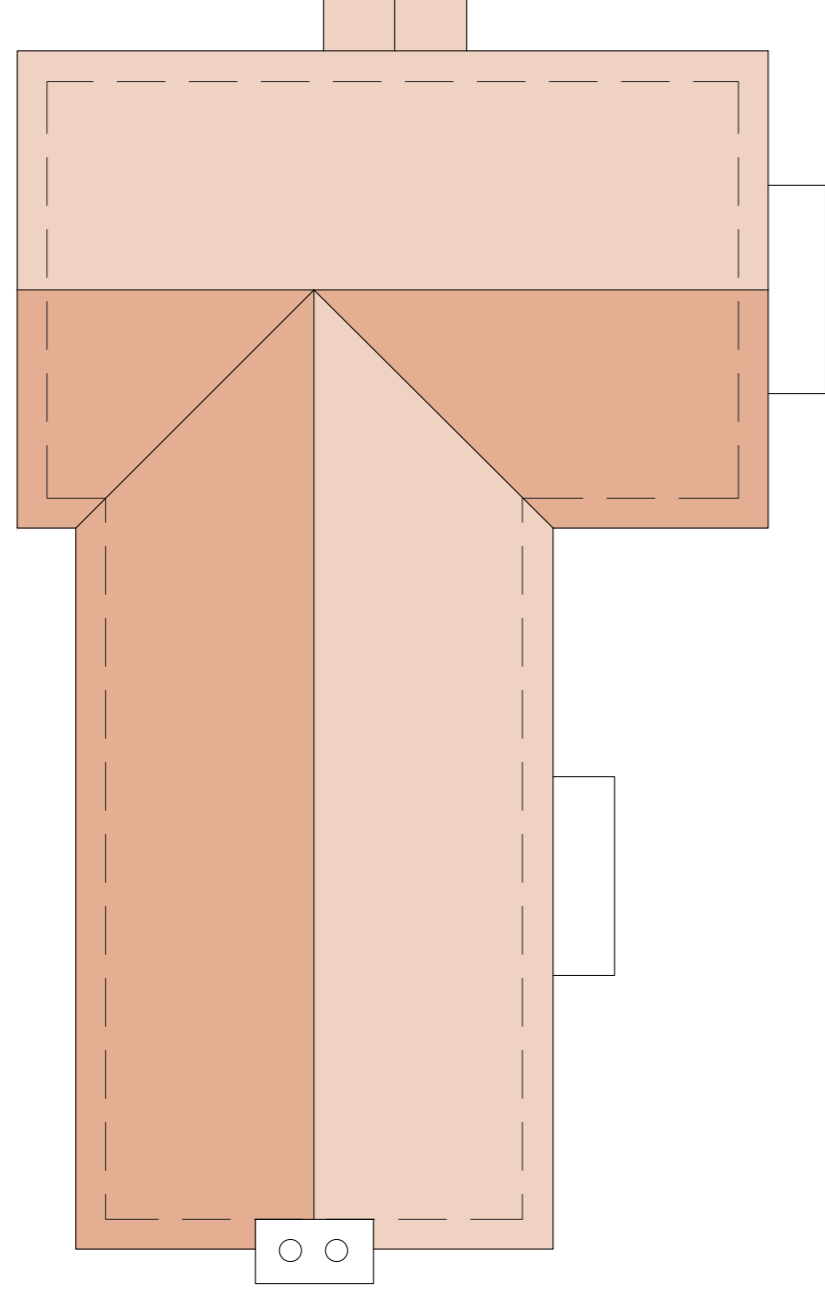
PLOTS 21 & 22 (TYPE C & C)
plans & elevations



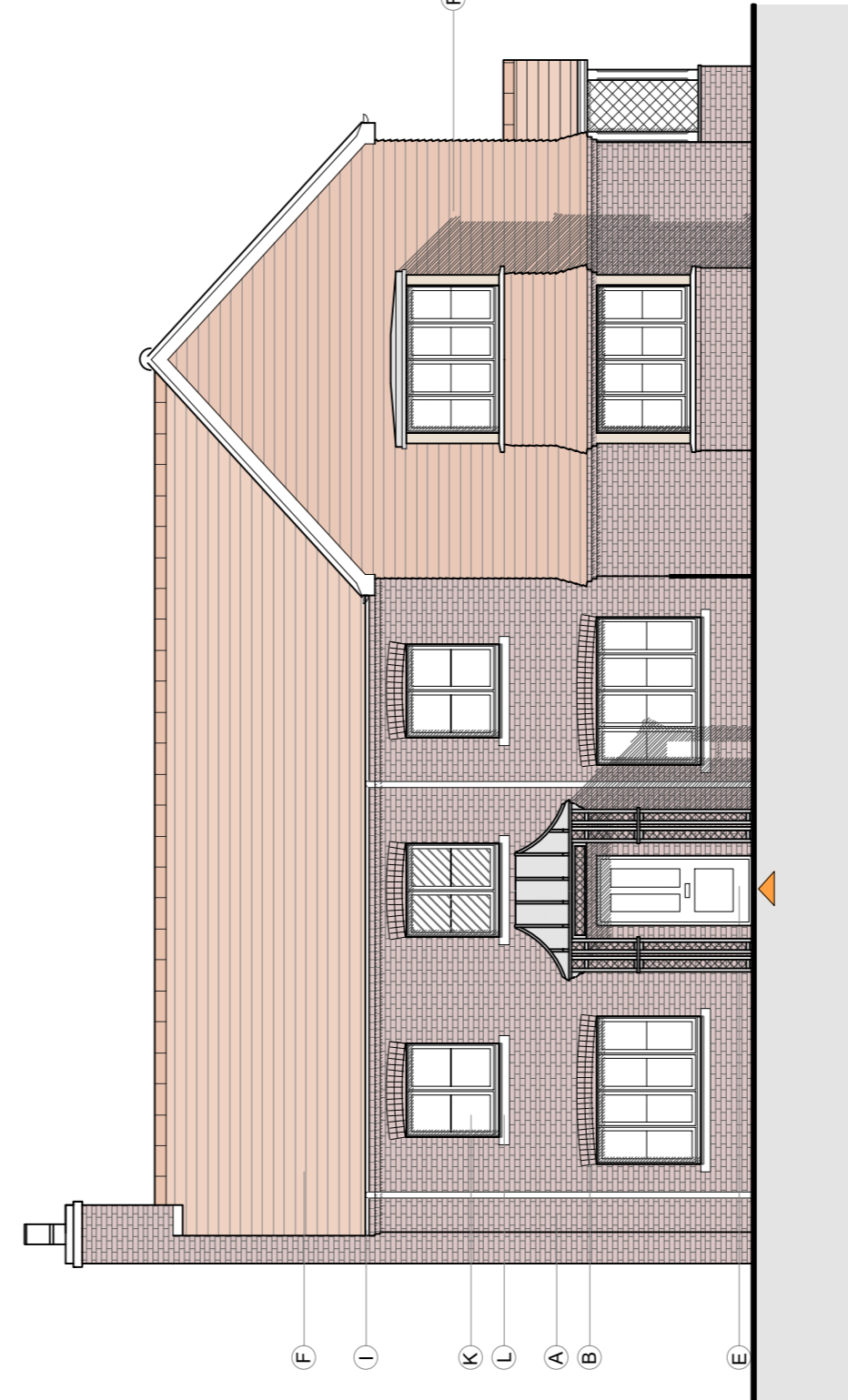
GROUND
floor plan



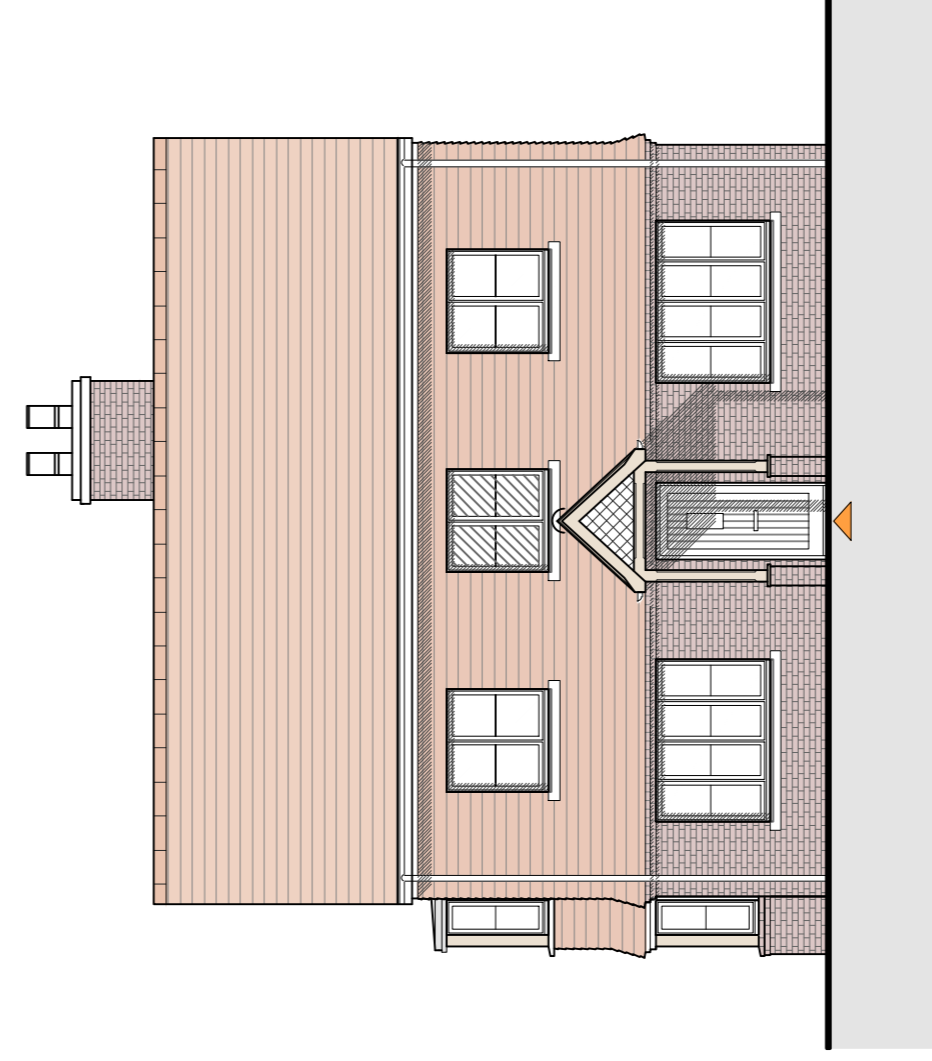
FIRST
floor plan



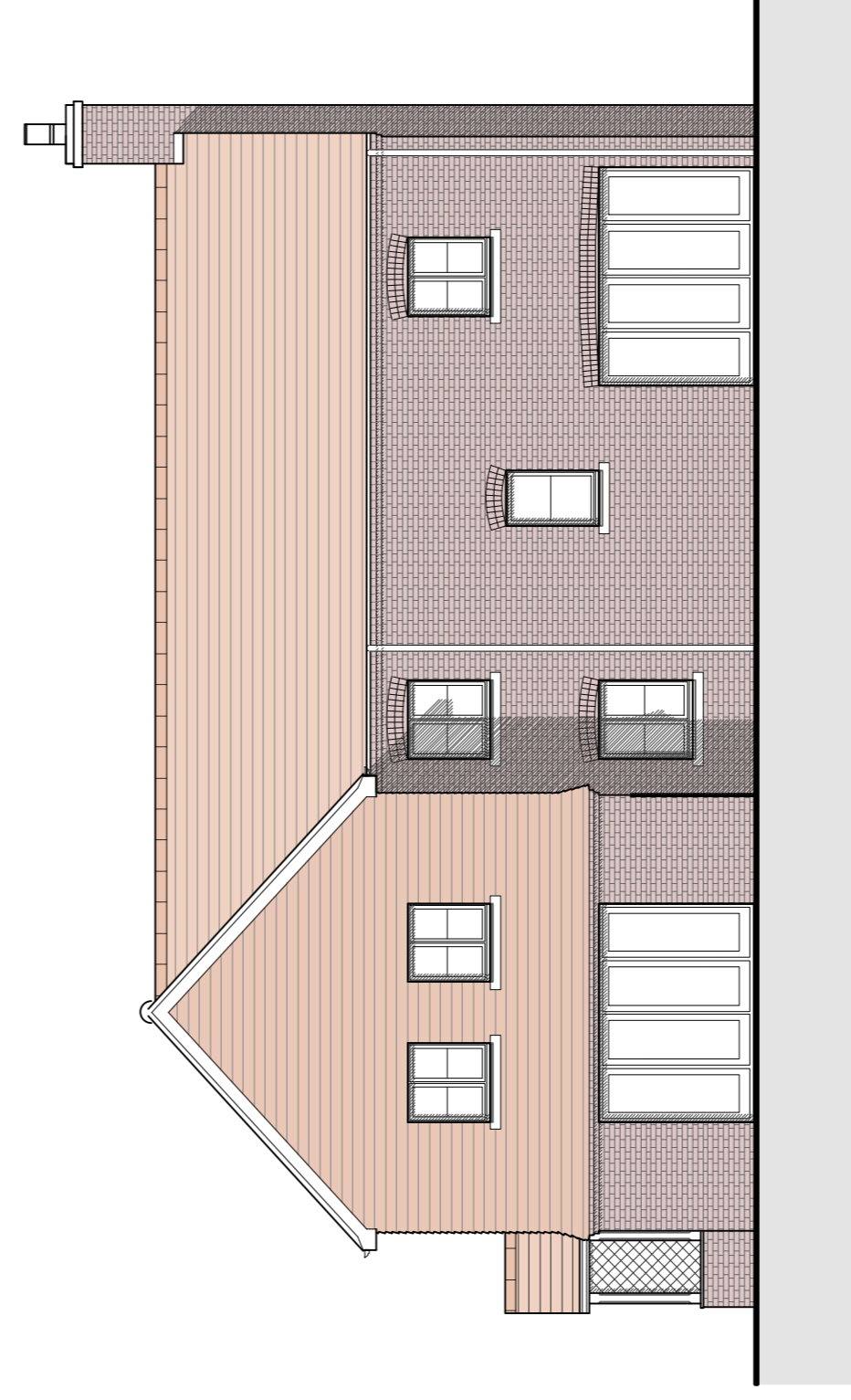
ROOF
plan



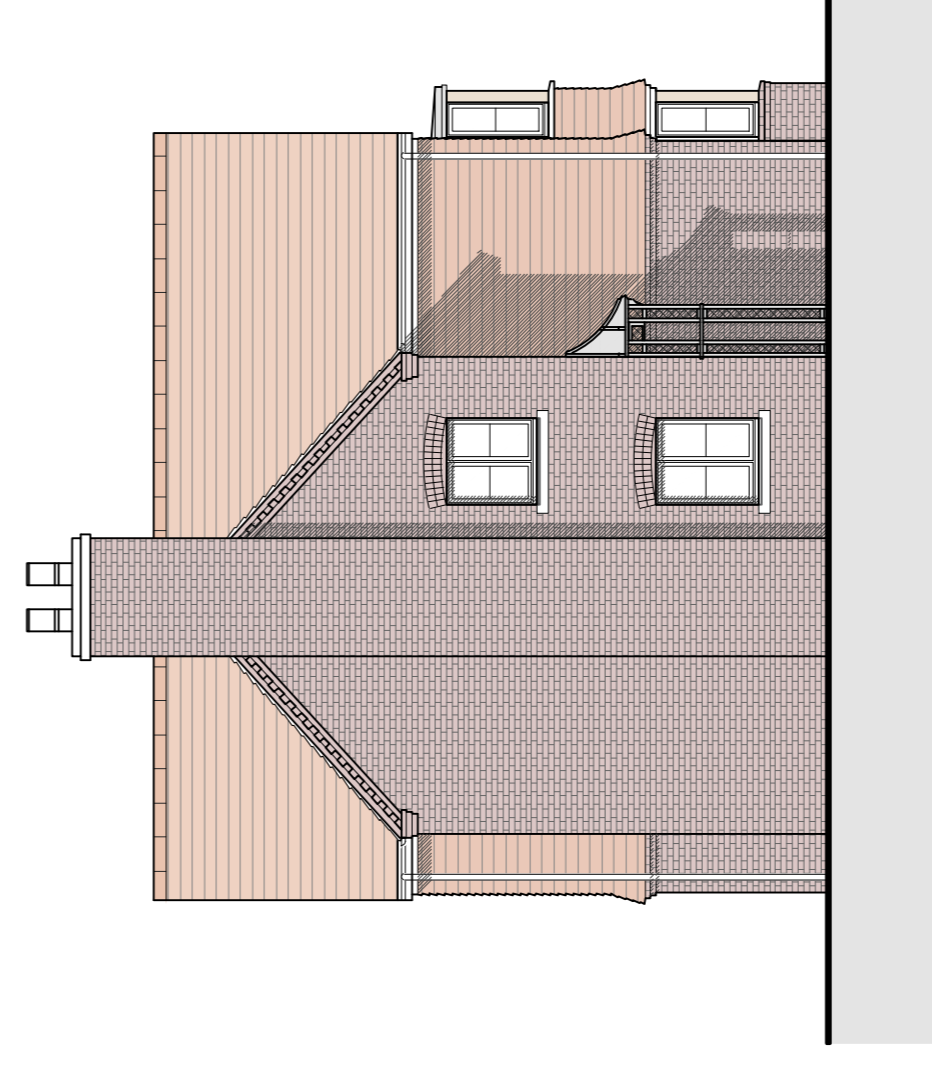
FRONT
elevation



SIDE
elevation



REAR
elevation



SIDE
elevation

Materials Key:

- A. Red multi stock facing brick in Flemish brick bond
- B. Red multi stock flat arch header/ brick detail
- C. Render
- D. Stone header
- E. Stained / Painted timber entrance door
- F. Natural clay roof tiles/ Clay tile hanging
- G. Natural slate roof
- H. Horizontal timber cladding (timber framed car ports)
- I. Polyester powder coated (PPC) metal rainwater good & soffit
- J. Lead clad dormer with PFC trims
- K. UPVC high performance windows (set back 150mm front face) & rooflights
- L. Buff reconstituted stone window cills
- M. Stone plinth

Drawn By	Date	Checked By	Date	Scale at A1				
JAB	01/07/21	JAB	01/07/21	1:100				
Job No.	Proj.	Disc.	Zone	Level	Type	Rule	No.	Rev.
20-062	OXL	MHA	00	XX	DR	A	014	P05